



Funded by
UK Government

Caldicot Castle

Address:

Church Road
Caldicot
NP26 4HU

Contact Telephone:

01291 420241



Caldicot Castle

What3Words:

- Main castle entrance – executive.banquets.divide
- Car Park Entrance – fellow.receiving.part
- Castle Public WC Facilities – pacifist.toward.aviation

Caldicot Castle (Welsh: *Castell Cil-y-coed*) is an extensive stone medieval castle in the town of Caldicot, Monmouthshire, in southeast Wales, built near the site of Harold Godwinson's former Saxon castle by the Norman earls of Hereford from about 1100.

The castle became a Grade I listed building on 10 June 1953.



On site assistance can be provided by the castle grounds staff.



Castle Entrance

Opening Times:

26th March 2024 – 3rd November 2024

- Tuesday – Sunday: 11:00 – 16:00
- Bank Holidays: 11:00 – 16:00

For more information regarding opening hours, visit:

<https://www.visitmonmouthshire.com/things-to-do/caldicot-castle-and-country-park-p1502531>



Local Transport Links:

The castle is accessible from the main public approach routes via the provision of footpaths and vehicular access routes.



Caldicot Bus Stops are located within 0.4 miles along the B4245 and 0.4 miles from the castle on Caldicot Cross.

Caldicot Rail Station is located over 1.2 miles away.



Parking:

- A carpark is provided near to the castle entrance.
- Additional parking is provided by the main road near some community gardens.
- This car park is free.
- Three accessible bays for Blue Badge holders are provided.
- The route towards the castle from the accessible bays is over 50m.
- Footpaths leading towards the carpark and the approach routes to the castle are steep in areas.



Drop off at the car park is available.

Further information regarding transport to Caldicot can be found here:

<https://www.monmouthshire.gov.uk/app/uploads/2015/01/74-Newport-Bus-19072015.pdf>

<https://tfw.wales/places/stations/caldicot>



Pedestrian Routes:

- Internal paths within the courtyard vary from approximately 840-1050mm.
- The pathway width is limited around the cannon.
- Internal castle grounds are mostly grassed.
- External approach routes are of sufficient width but there is an area near a vehicular passing point that has no pedestrian route section.



External Stepped Access:

- Routes across the castle grounds require stepped access, this includes:
 - The Walls
 - The Rose Garden
 - The Keep
 - The Keep rooftop
 - Woodstock Tower
 - Near Woodstock Tower
 - South-East Tower
- Stoned and wooden steps are provided. Open risers are provided to the Keep Rooftop, the Woodstock Tower and South-east Tower.
- Nosings are not contrasted on external steps.
- Some stairs feature handrails. Steps centrally in the Castle grounds do not feature handrails.





External Ramped Access:

- An external ramp is provided near to the Woodstock Tower. This ramp does not feature handrails.

Entrances:

- The main entrance into the Castle and grounds features a width in excess of 2000mm.
- Some uneven surfaces are provided to the main entrance due to the heritage status of the castle.
- Level access is available at the Visitor Centre.
- Double doors are provided. When both open, a width in excess of 1200mm is provided.
- Entrance doors remain open during opening hours.



Passenger Lift:

- A lift is not provided to this site.
- Internal routes require stepped access across the castle.



Reception:

- The reception counter is one height only.
- An induction loop system is not available.



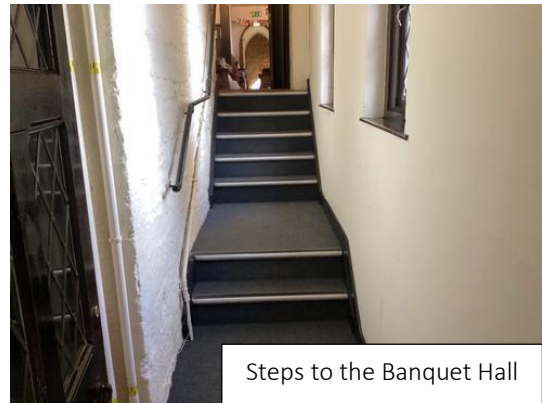


Main Routes:

- The Gatehouse ground floor provides level access.
- The Visitor Centre and café provide level access.
- There are areas that require steps, such as the corridor leading to the Hall.
- Level access is provided to this area from the main entrance.
- Some corridors measured to be narrower than 900mm.
- Access to the Upper floors and to the Towers require the use of steps with no lifts or level access provided.
- The following areas require stepped access:
 - Gatehouse
 - Upper Floors including the Banquet Hall and Solar Room
 - Keep
 - Woodstock Tower
 - Southeast Tower



Banquet Hall



Steps to the Banquet Hall



General WC Facilities:

- Access to the WC facilities is on a level route.
- The men's facility doorway measured to be 750mm.
- The lady's facility doorway measured to be 738mm.
- Lever style taps are provided.



Entrance to WC facilities



Accessible WC Facilities:

- The accessible WC has limited dimensions for manoeuvre.
- The compartment is 1194mm by 2184mm (1428mm excluding pipework cover).
- A mirror is provided.
- A baby change table is provided.
- There is limited space to manoeuvre externally with the space being less than 1500mm by 1500mm.
- Grab rails are provided and are well contrasted against their surround.
- A cord alarm system is provided.



Lighting:

- Lighting levels are generally good with no low levels of lighting.
- Some areas had wall mounted lights.

Services and Facilities:



- TV promotion videos are available.
- Some background music and narration was provided; captions are not available.
- Areas that are not accessible via level access have footage when required.
- These videos do not have sound.
- Exhibitions are generally within optimum viewing band of 750 - 2000mm from floor level.





- IT facilities are not provided.
- Various seating and benches are available in the Castle and grounds, some with armrests.

Picnic Areas:

- Internal Courtyard
- Some picnic benches are provided on the gravelled surface.
- Designated wheelchair accessible benches are not provided.
- Further benches are provided on grassed areas or on hard packed earth.
- Accessible routes are limited.



Picnic Area

Acoustics:

- There are no unexpected or intrusive noises.
- A designated quiet space is not provided but can be provided when needed.

Way Finding:

- There is no tactile or braille signage provided throughout the site.
- There is limited wayfinding signage.
- The Guidebook is available within the Visitors Centre.
- Interpretation boards are available.



Guidebook



Interpretation Board



Further information:

- Portable induction loops are provided and can be requested when required.
- Fixed loop systems cannot be installed due to the heritage nature of the site.
- A collection of videos produced as a walk through to give a first-person view are available for inaccessible areas.
- This is on an iPad and can also be shown on the TV within the Visitor Centre.
- The fire alarm system features flashing beacons in the WC facilities.

